

MÜLHEIM PLANT

advocacy planning

Nachbarschaftstreff Köln-Mülheim Nord NMN Arbeitsgruppe advocacy planning

Brachfläche Alter Güterbahnhof Schanzenstrasse Köln - Mülheim



Konzeption und Copyright:

Büder + Menzel Architekten BDA _ Busmann + Haberer GmbH Stand: Februar **2009**

Das haus der architektur köln (hdak) unterstützt diesen Prozess und beteiligt sich an der Projektförderung



MÜLHEIM PLANT

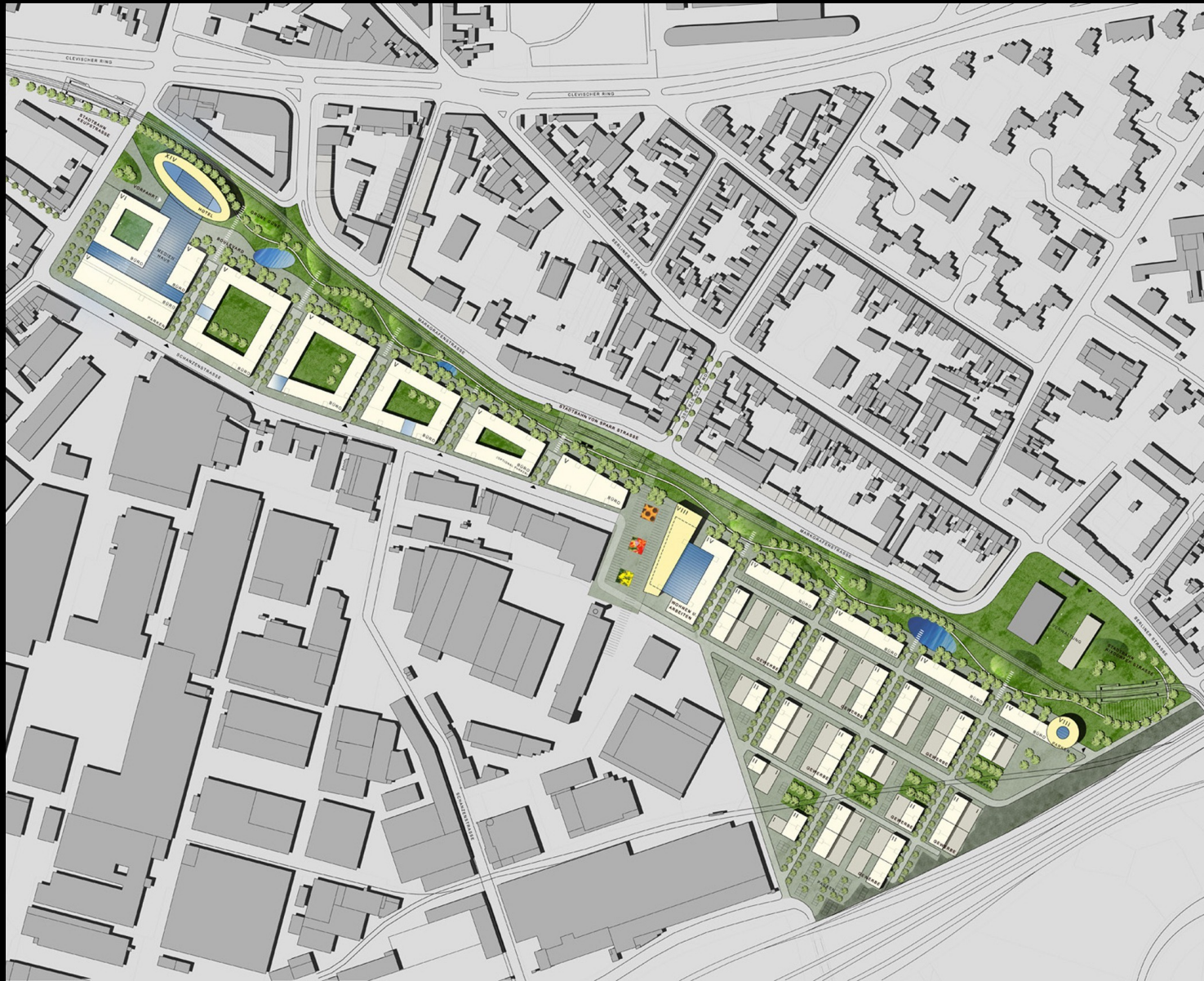


MÜLHEIM PLANT



Grundlage:

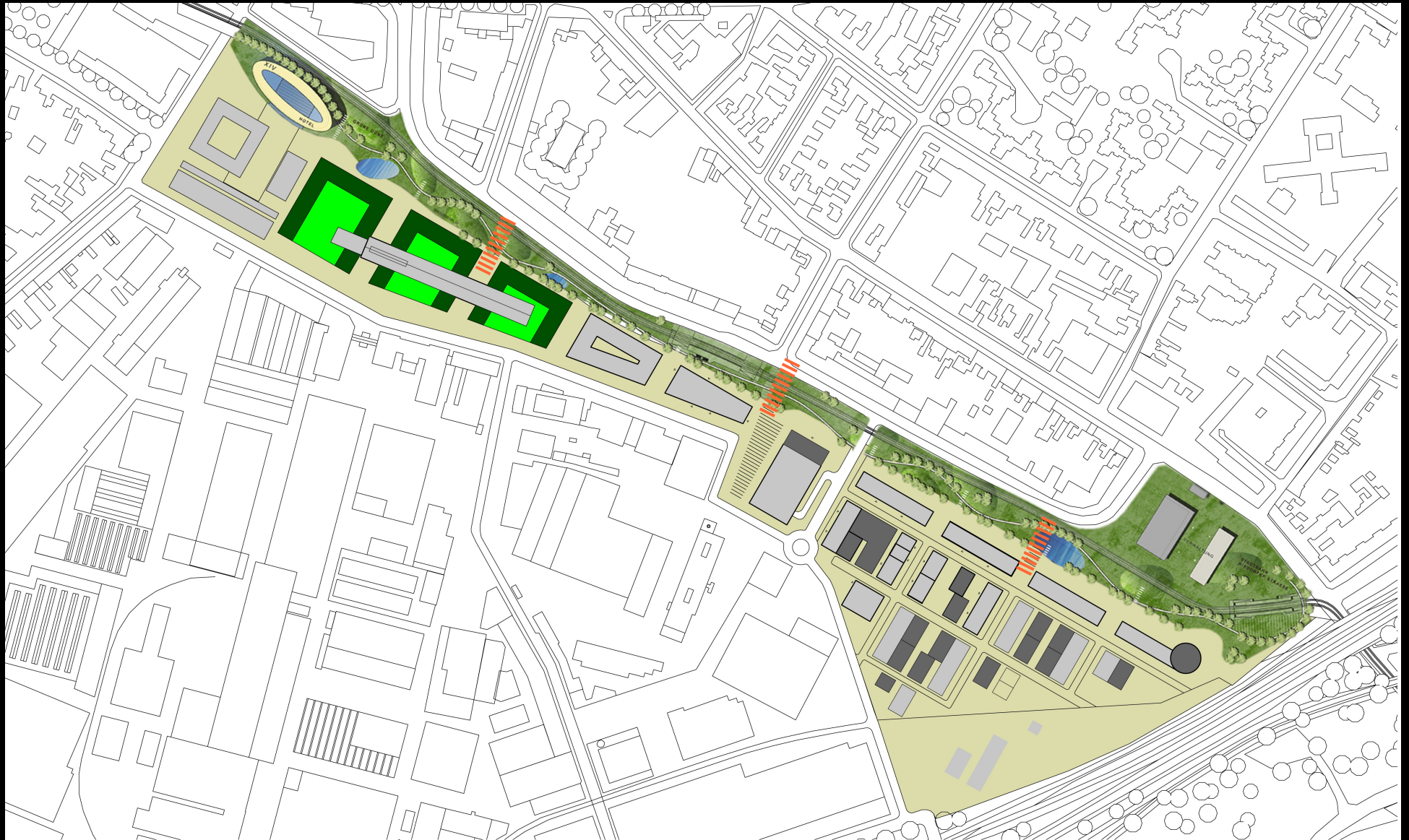
1. Preis Städtebaulicher Wettbewerb 2002



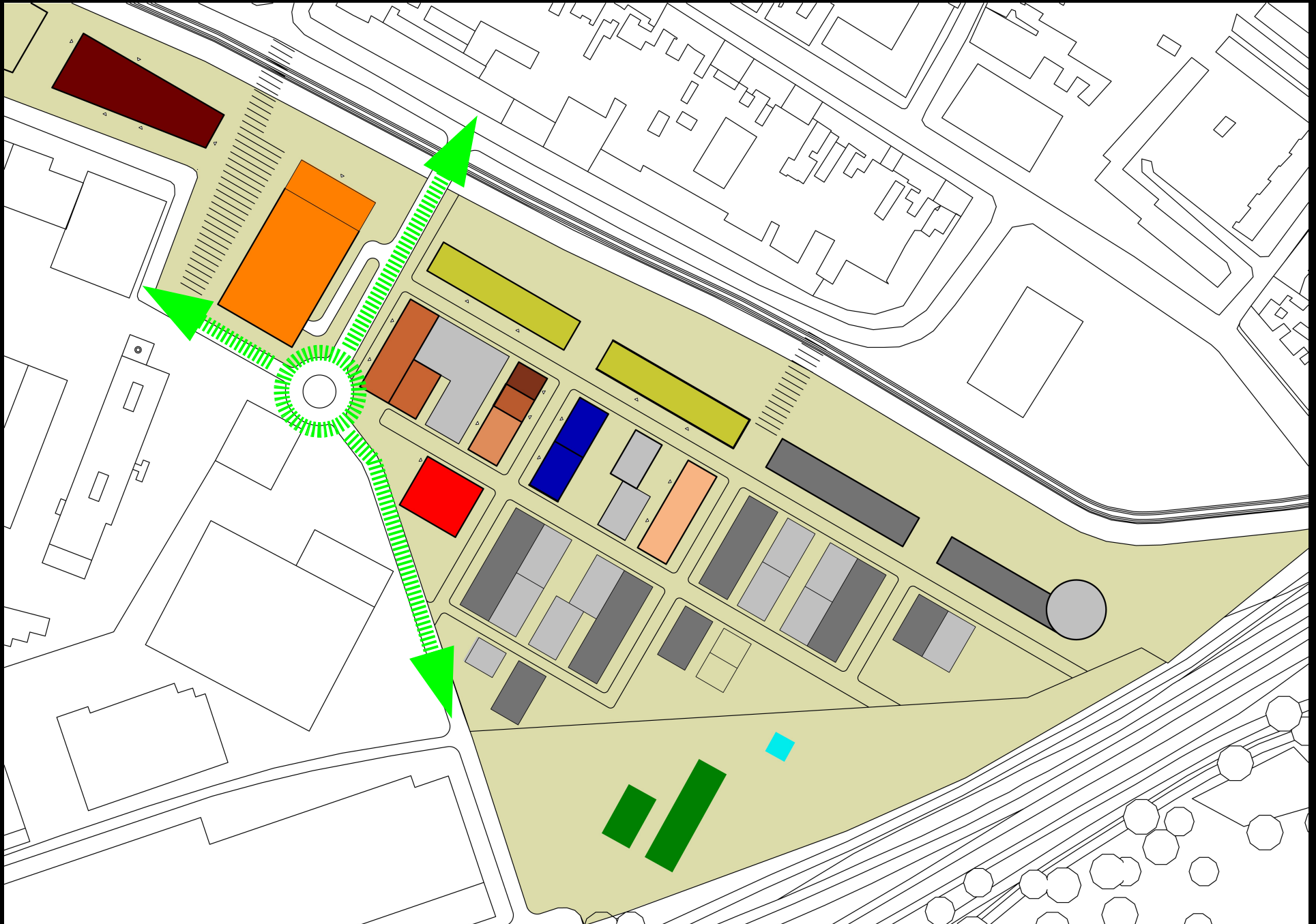
AG Büder + Menzel Architekten BDA
Busmann + Haberer GmbH

Luftbild





Übersicht mit neuer Strassenquerung zur Markgrafenstrasse



Basar

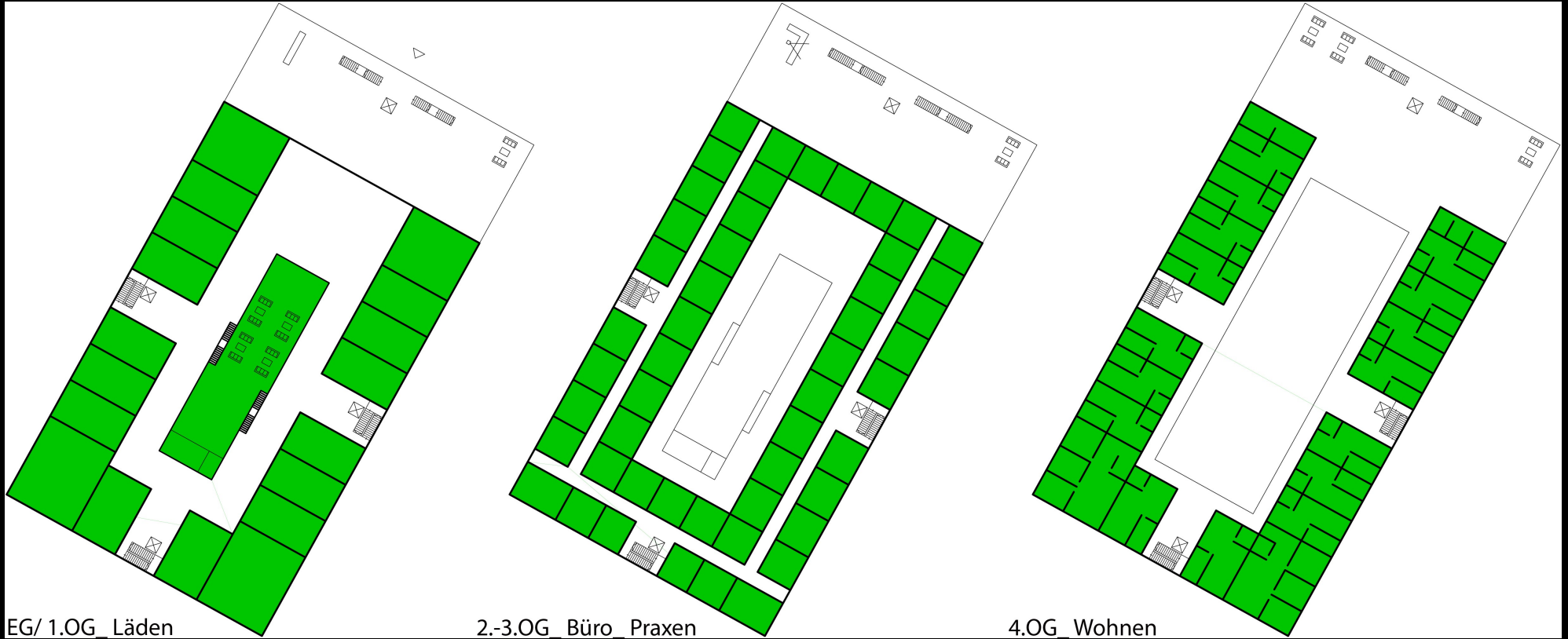


Integratives Wohn-und Geschäftshaus



Advokat : A. Demir

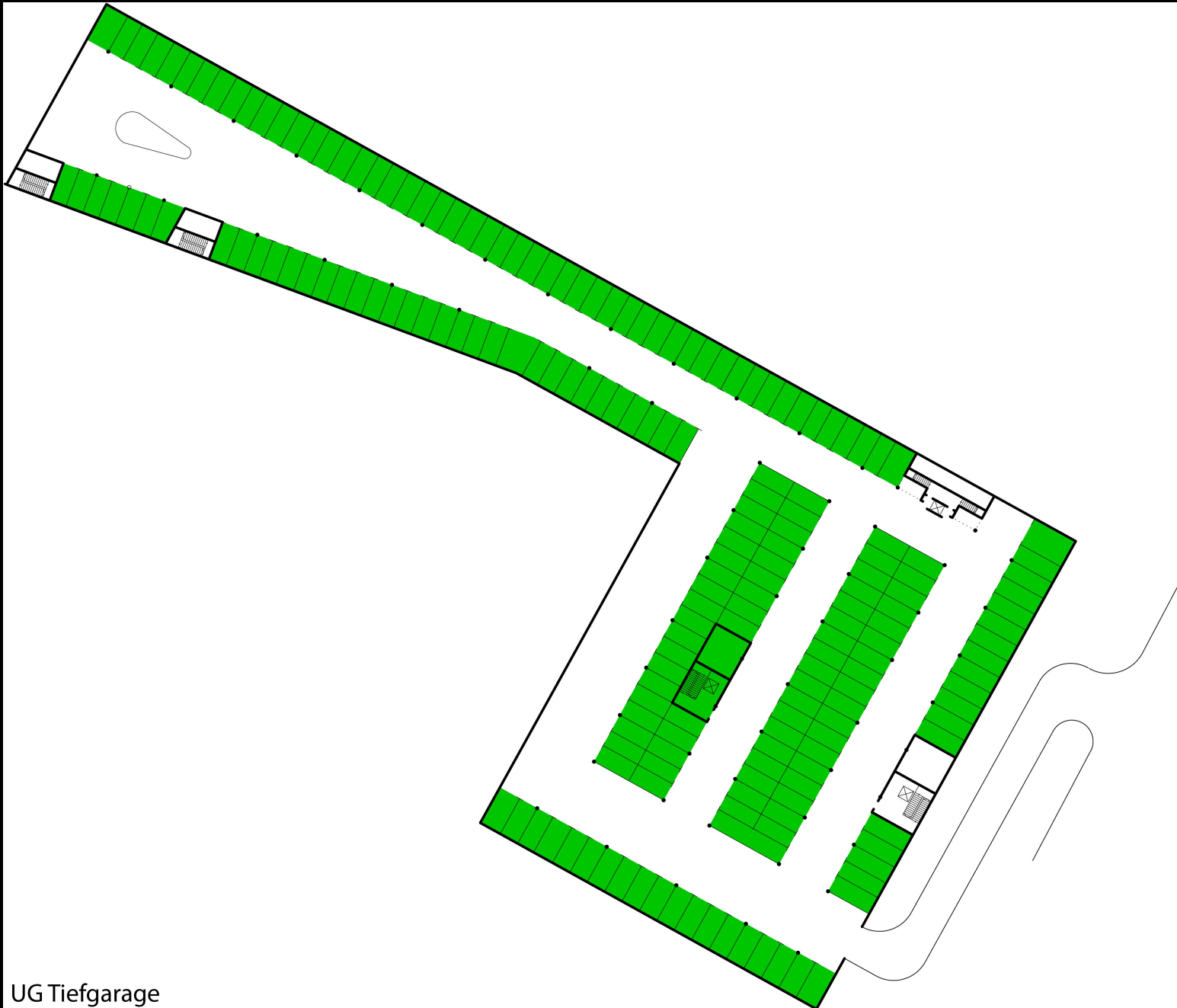




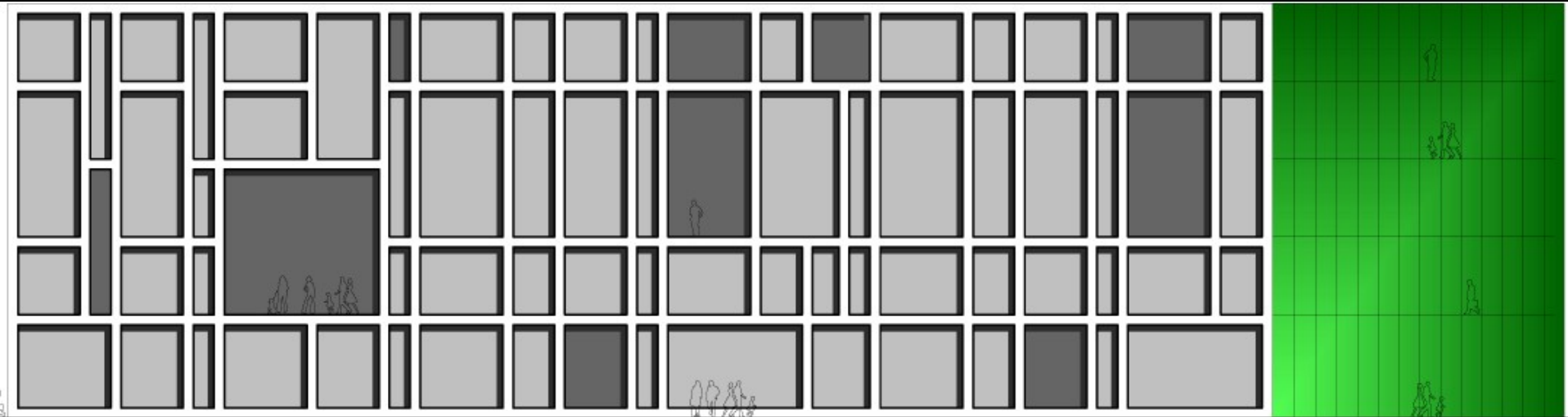
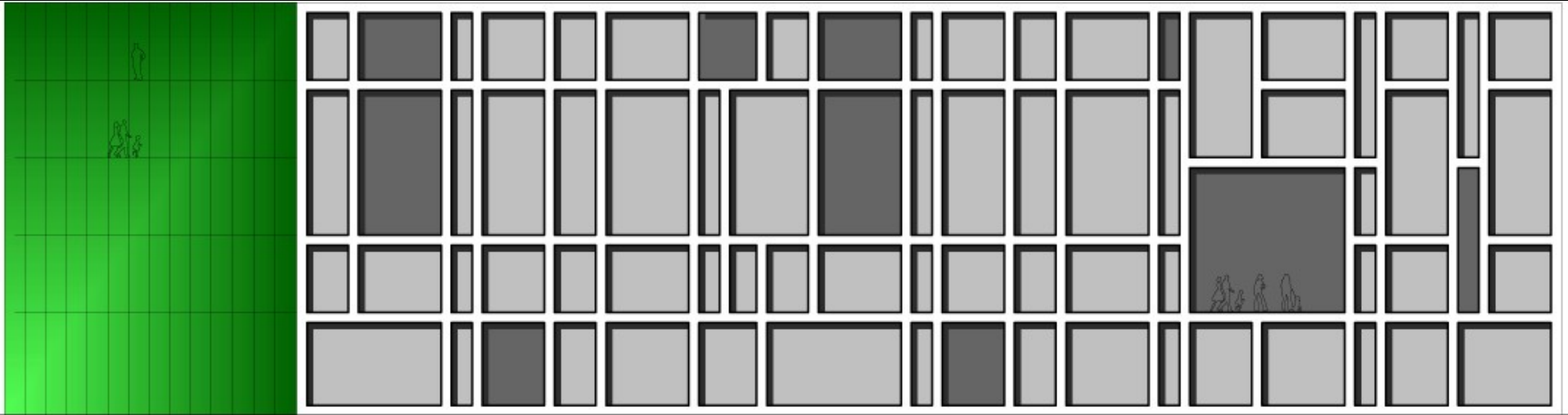
EG/ 1.OG Läden

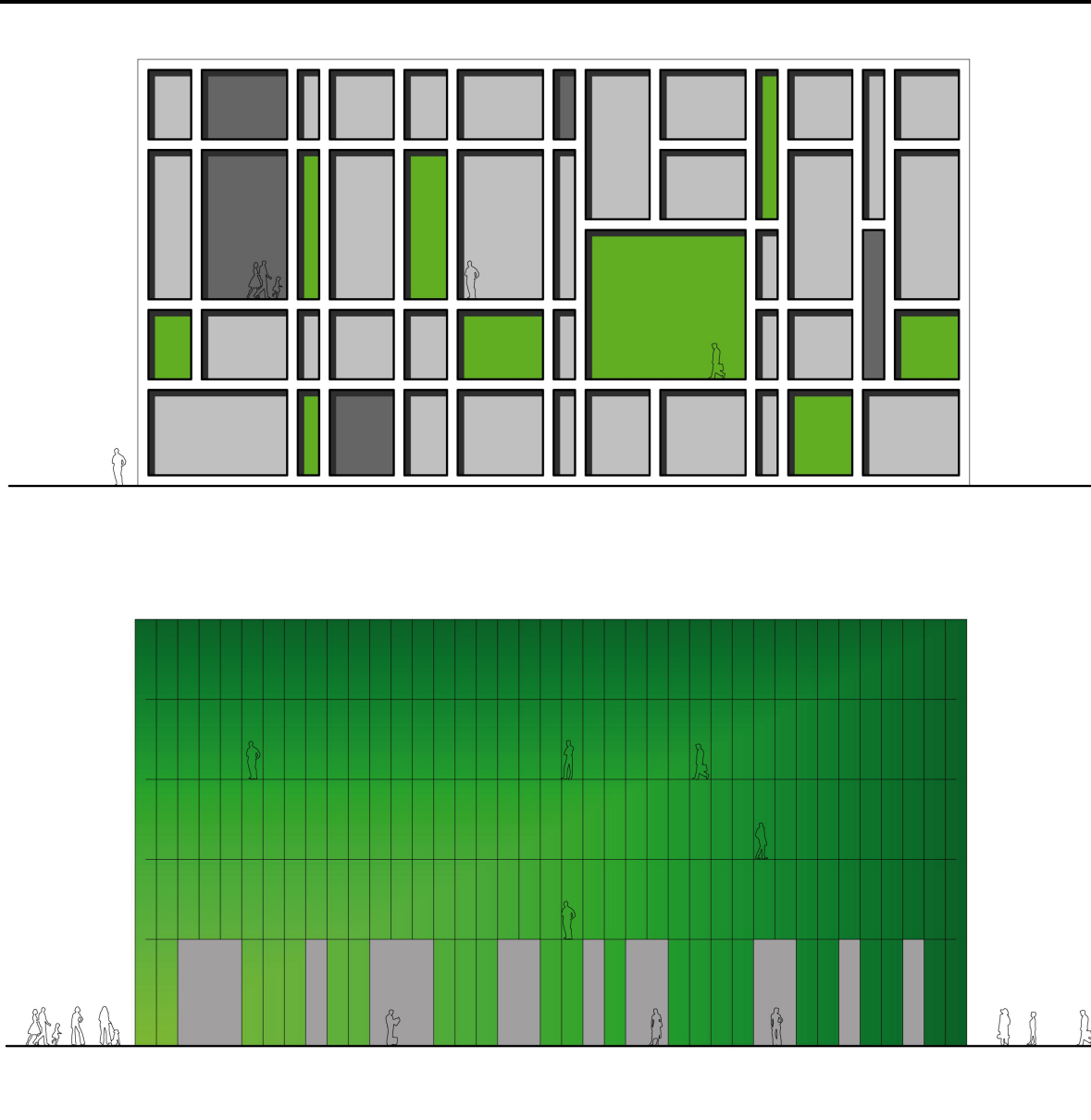
2.-3.OG Büro Praxen

4.OG Wohnen



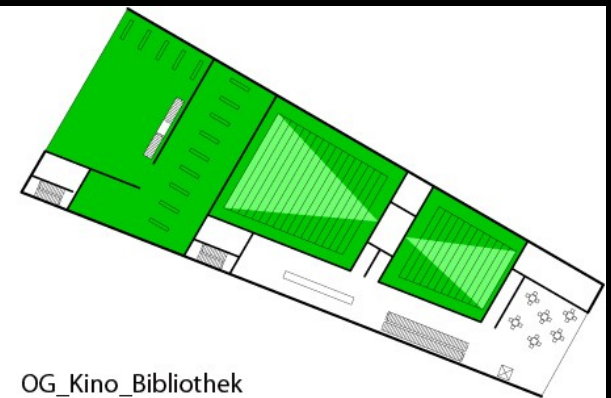
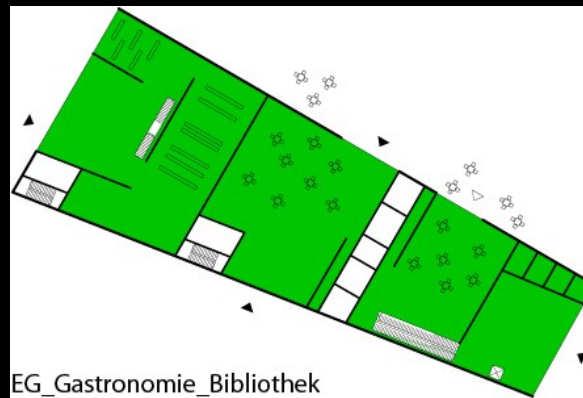
UG Tiefgarage





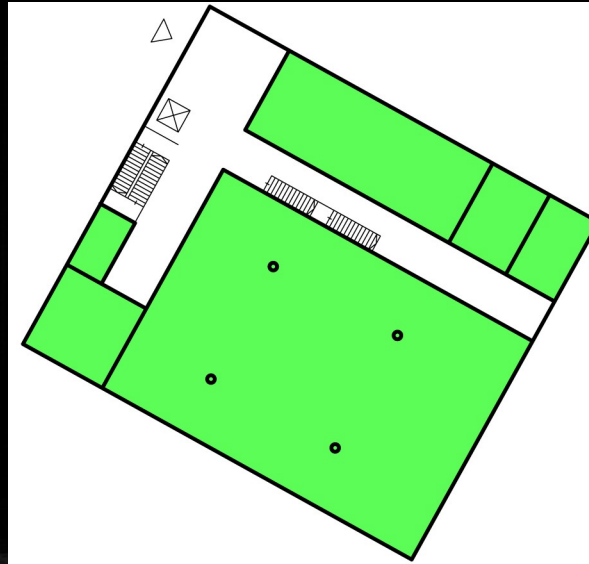


Advokat : M.K.

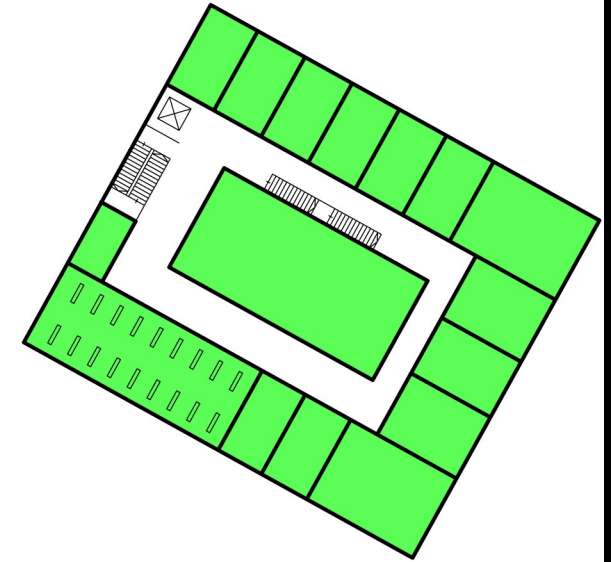


EG_Gastronomie_Bibliothek

OG_Kino_Bibliothek



EG_Veranstaltung



1.OG_Religionen

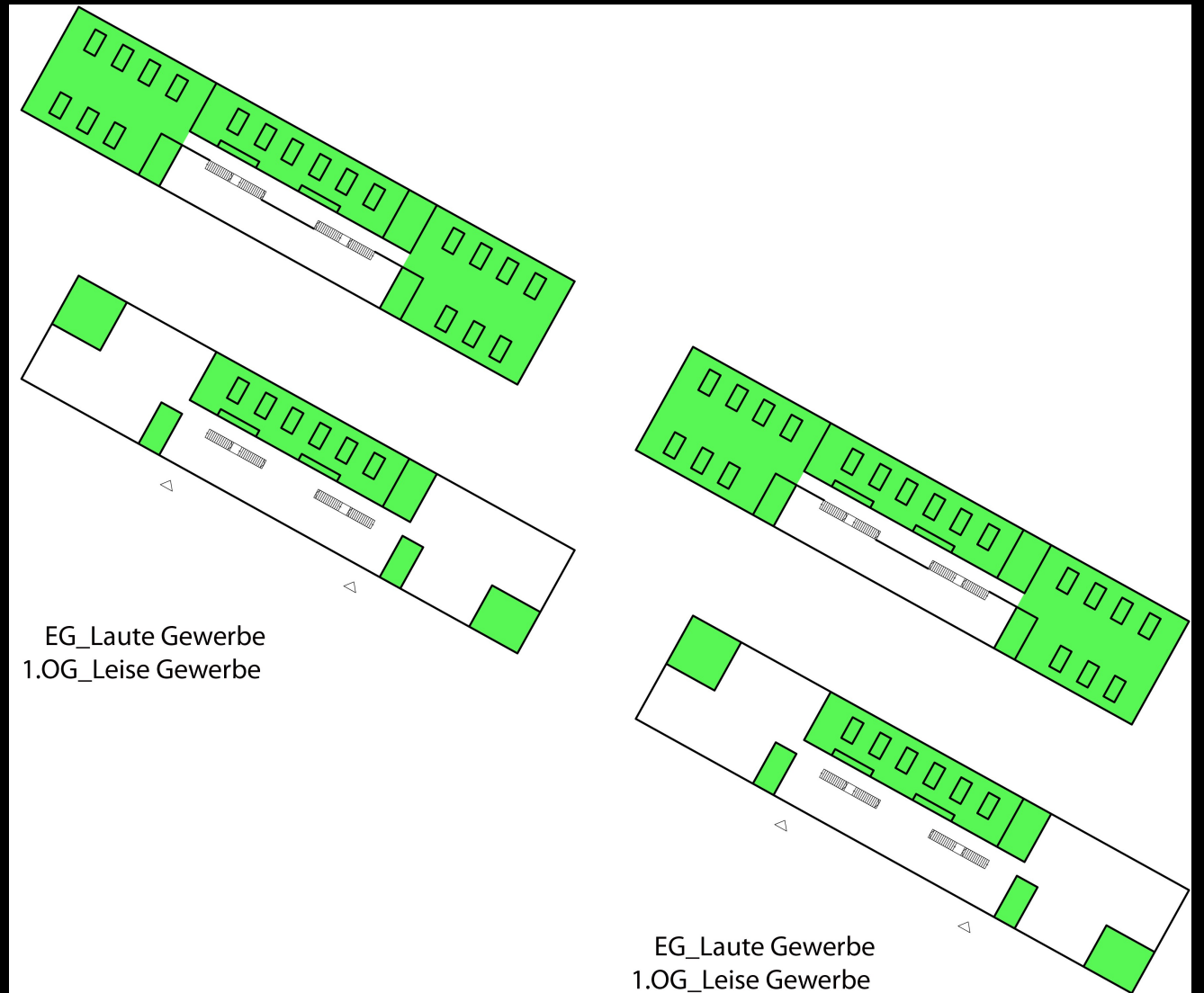
Advokat : Santi Dhamma Vihara

Beispielprojekt_Franz Liszt Haus



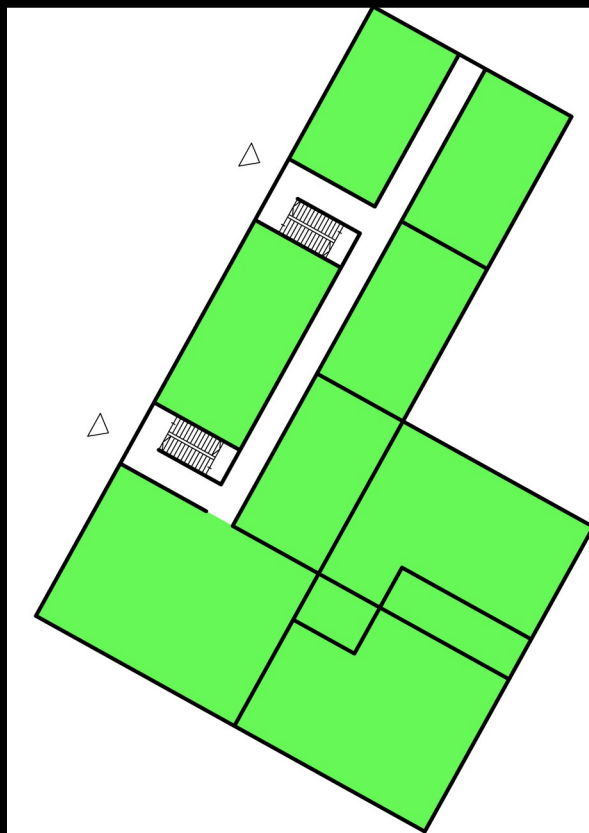


Advokat : R. Kippe

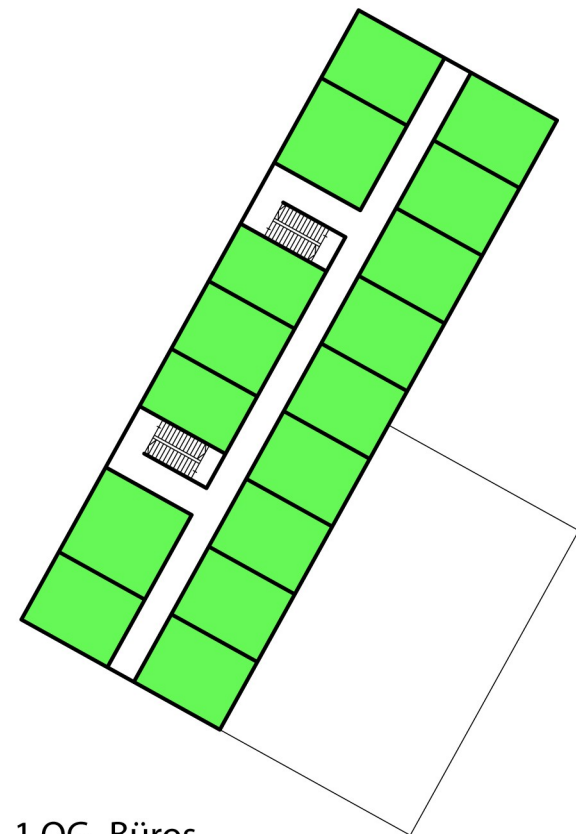




Advokat/in : S. Özdog
P. Kischitzki



EG_Schanzenfestival.org

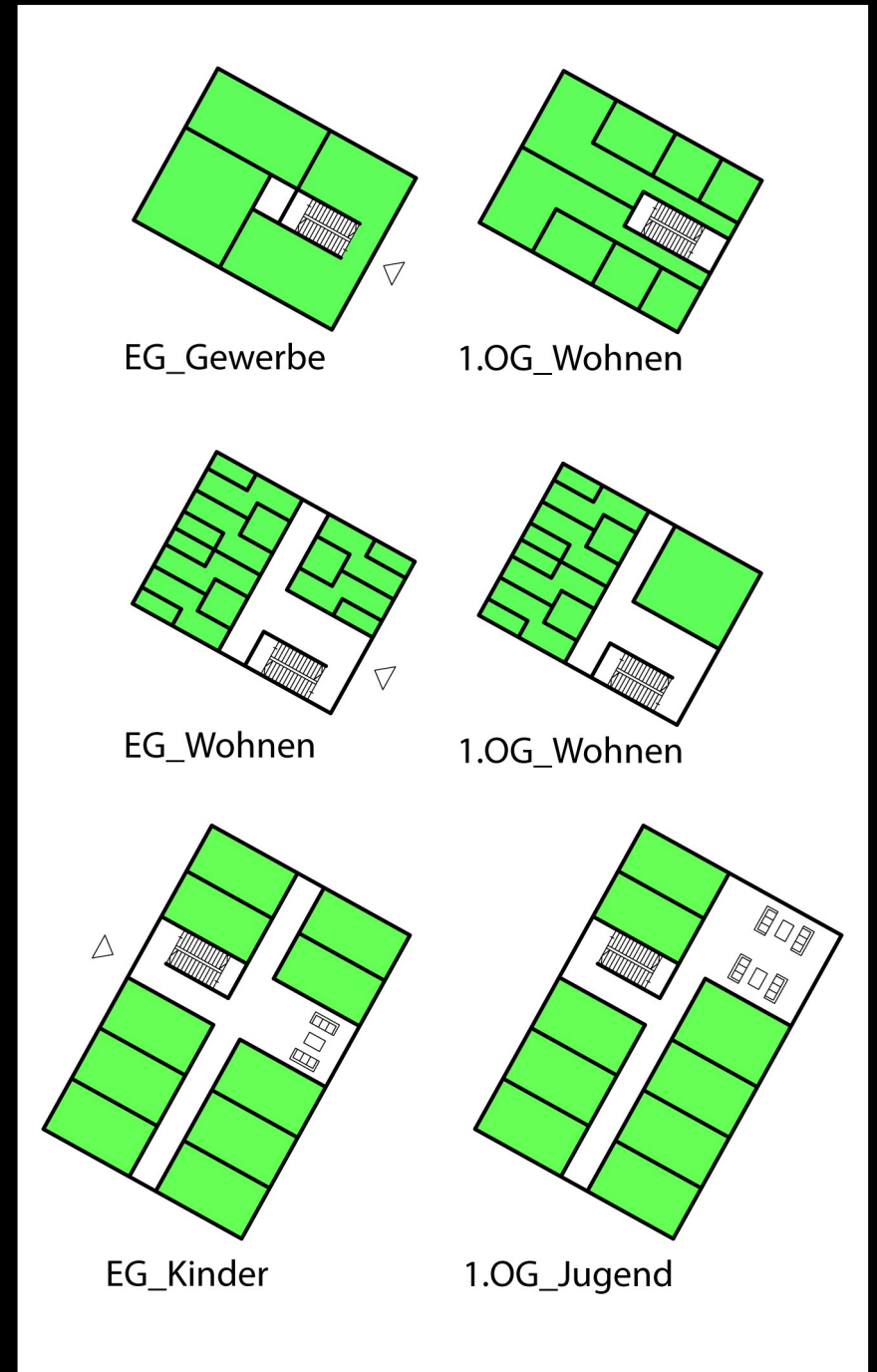


1.OG_Büros

Wohnhaus SSM_ISS_ZFH



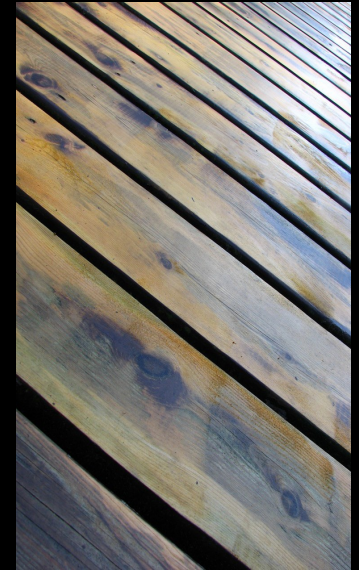
Advokat : A.Koban, M.Massip, R.Bauerfeind



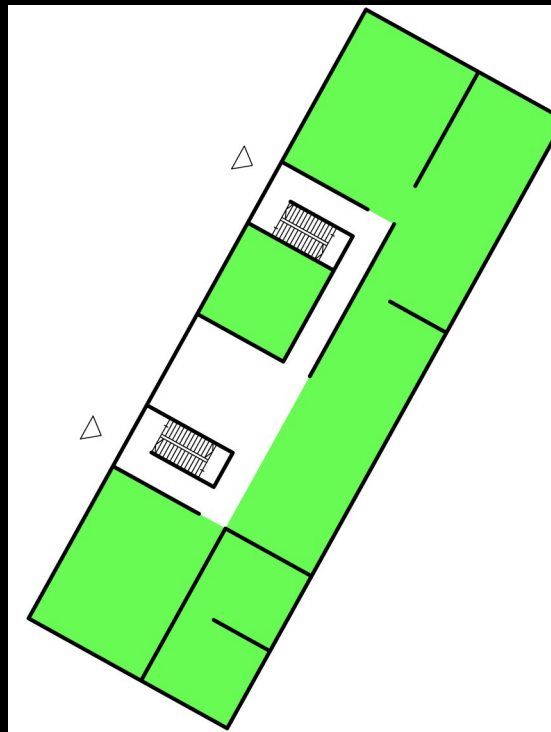


Advokat : E.Daoud

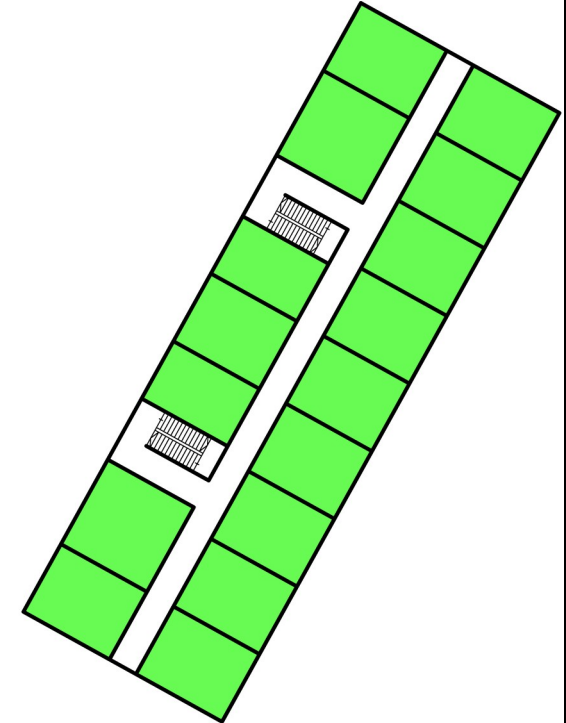




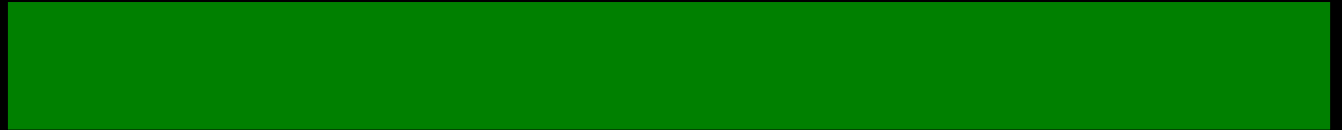
Advokat : N. Neises



EG_Verkauf



1.OG_Gewerbe



Advokat : G.Schönau



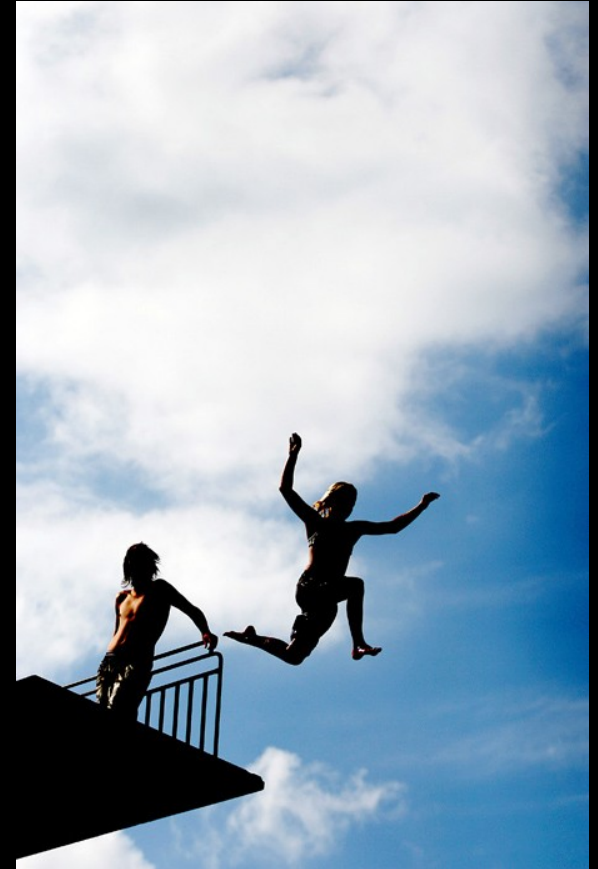
BA



advocacy planning

Sprungturm

Bunter Acker



Köln_Mülheim / NMN / Büder + Menzel Architekten BDA

Busmann + Haberer GmbH

Visualisierung Von-Sparr-Platz

